

30年 安佐地区感染症・サーベイランス

年次推移 (H23～H30年)

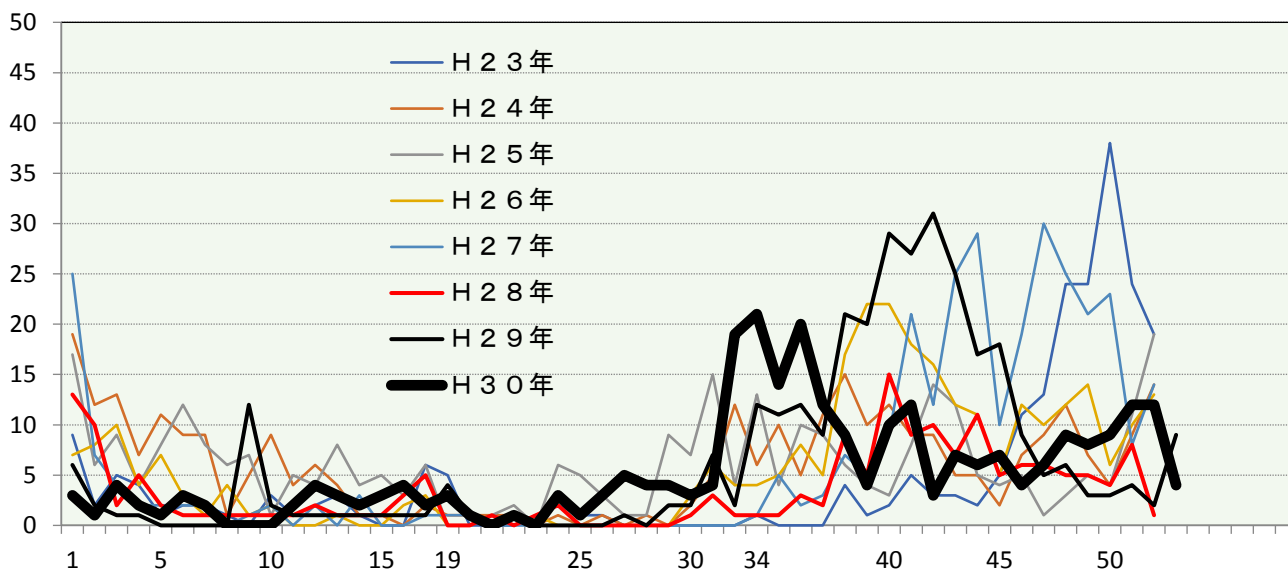
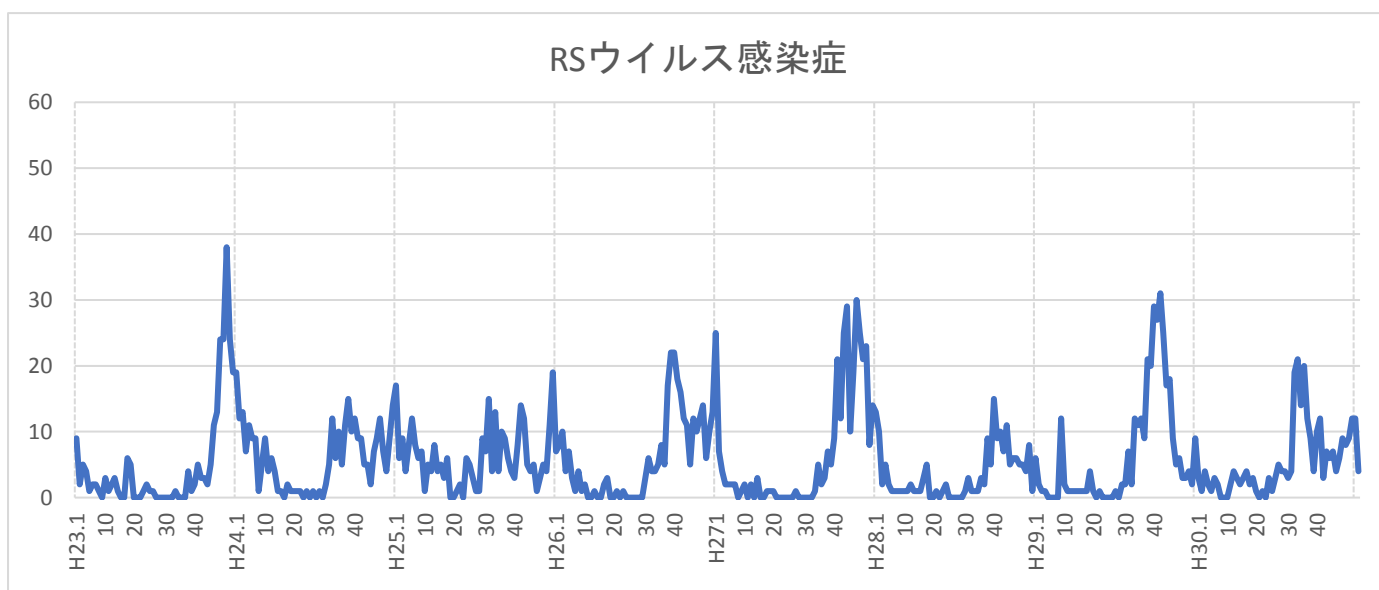
年間報告 (H30年)

(定点数 24、縦軸報告件数)

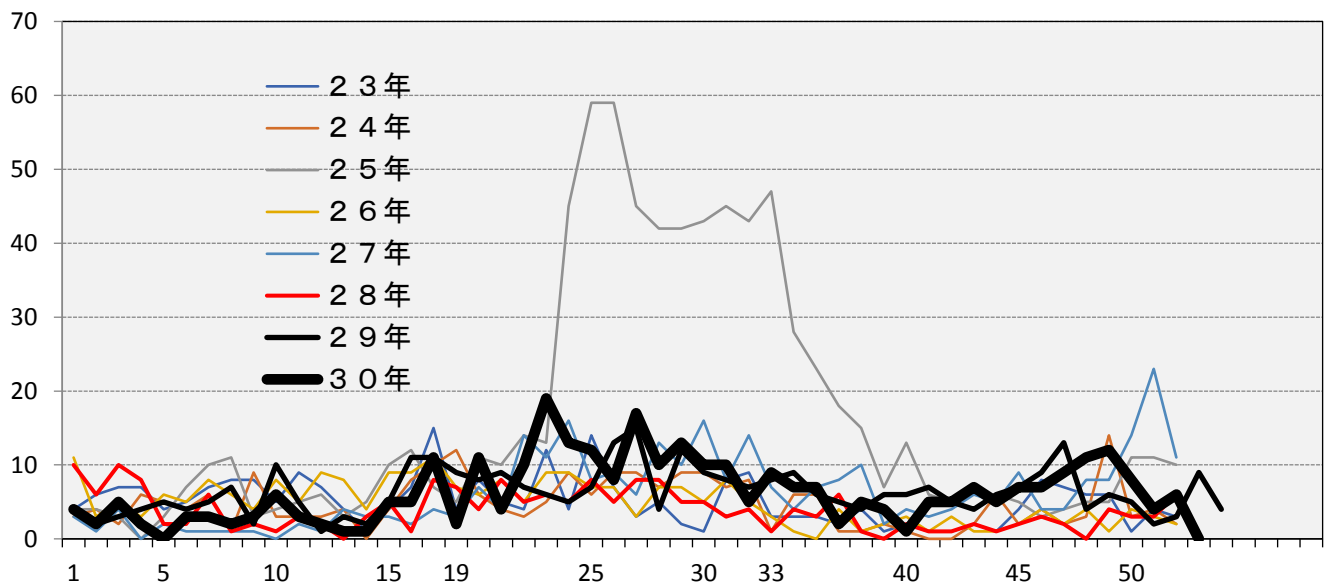
安佐医師会感染症対策・サーベイランス委員会

31年1月22日

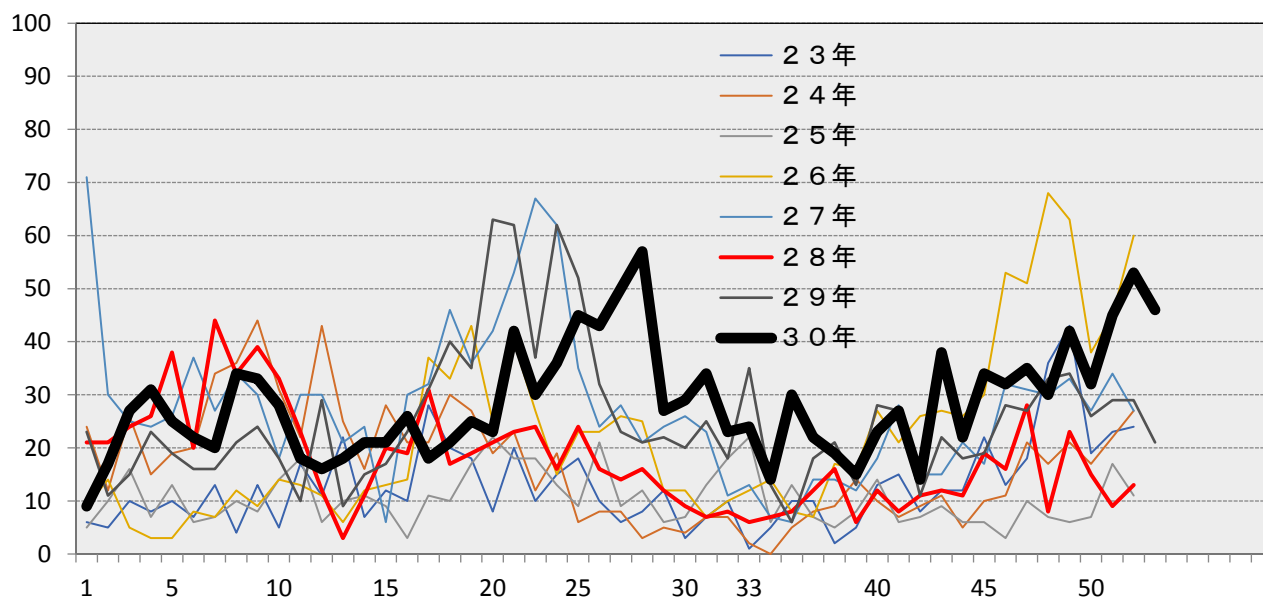
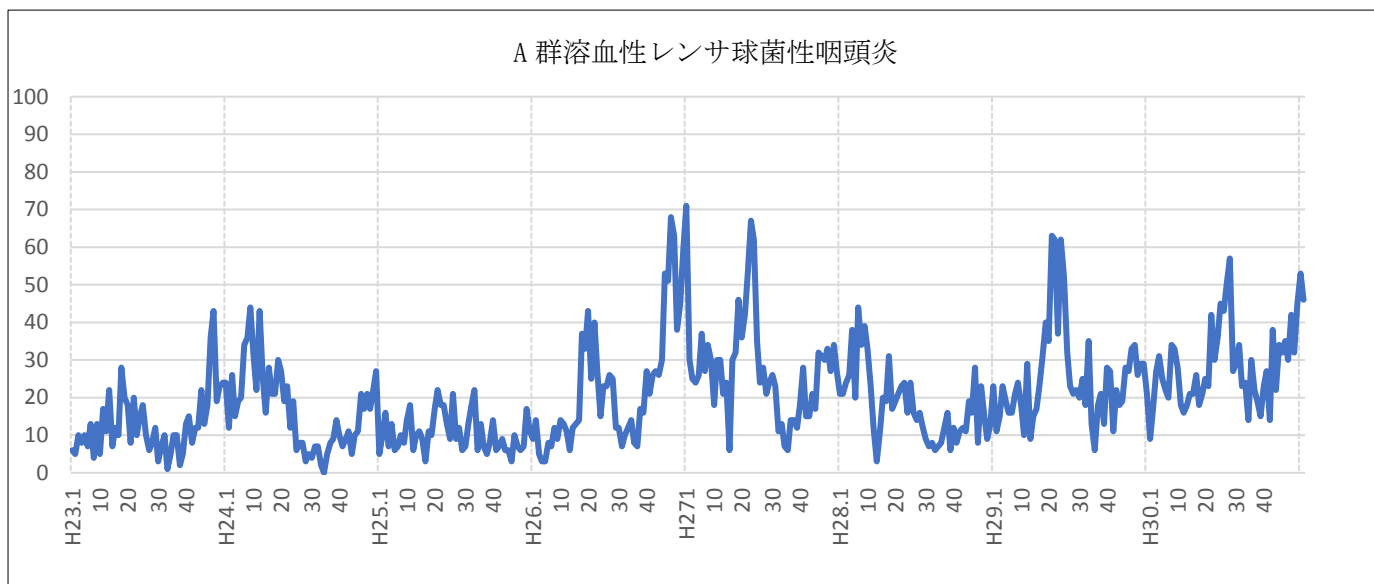
RSウイルス感染症



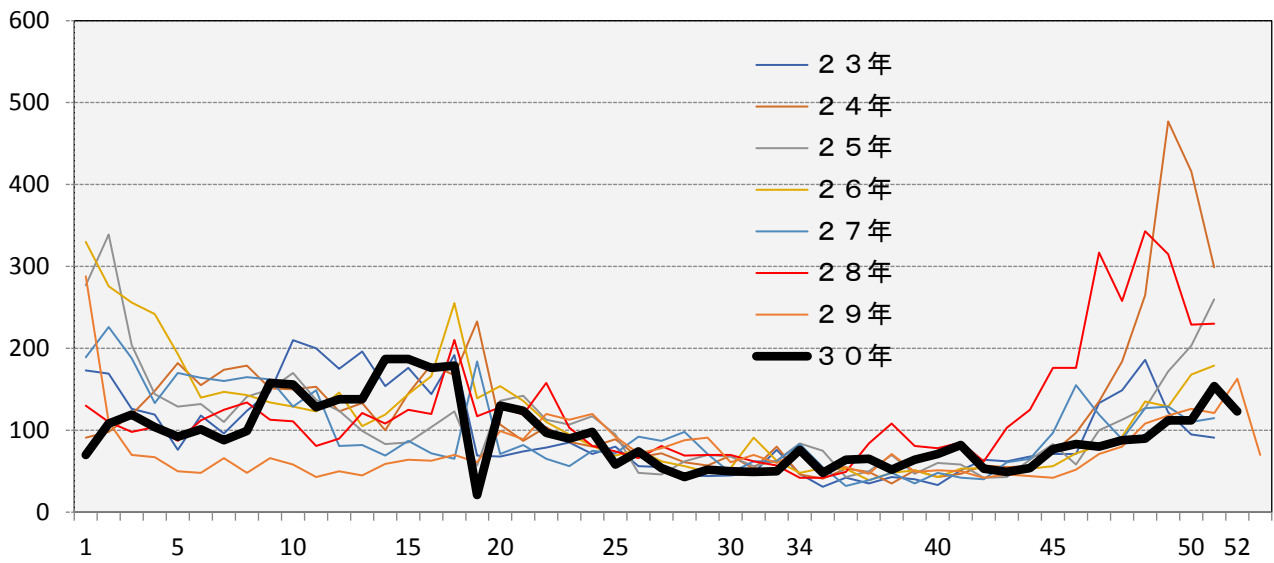
咽頭結膜熱



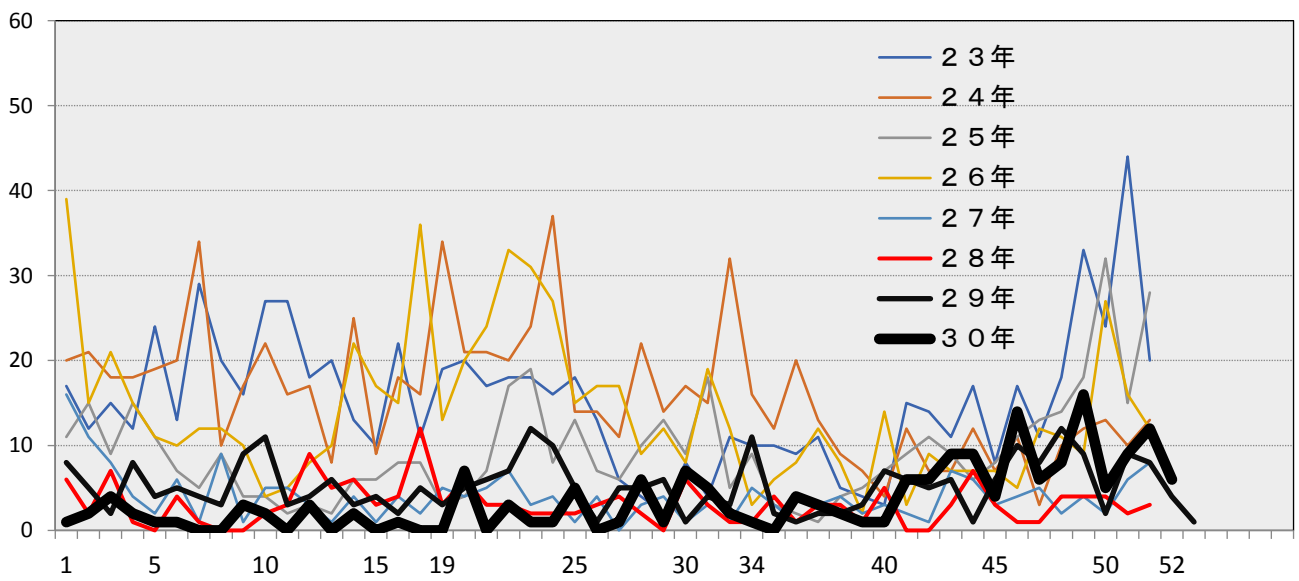
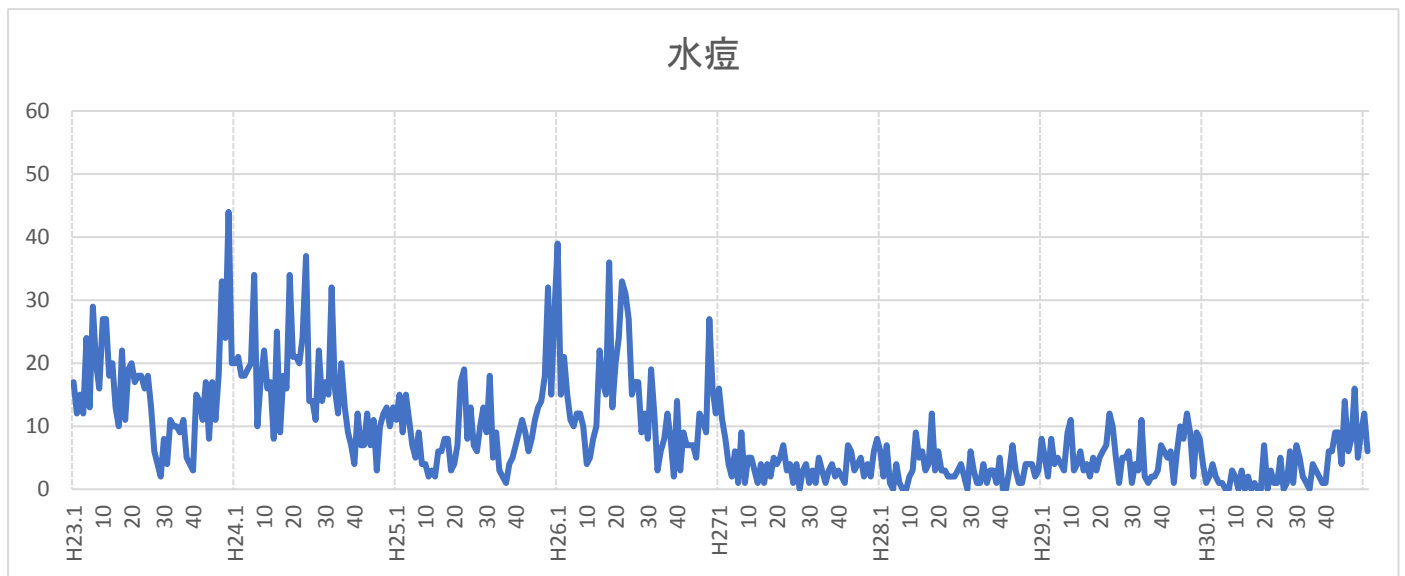
A 群溶血性レンサ球菌性咽頭炎



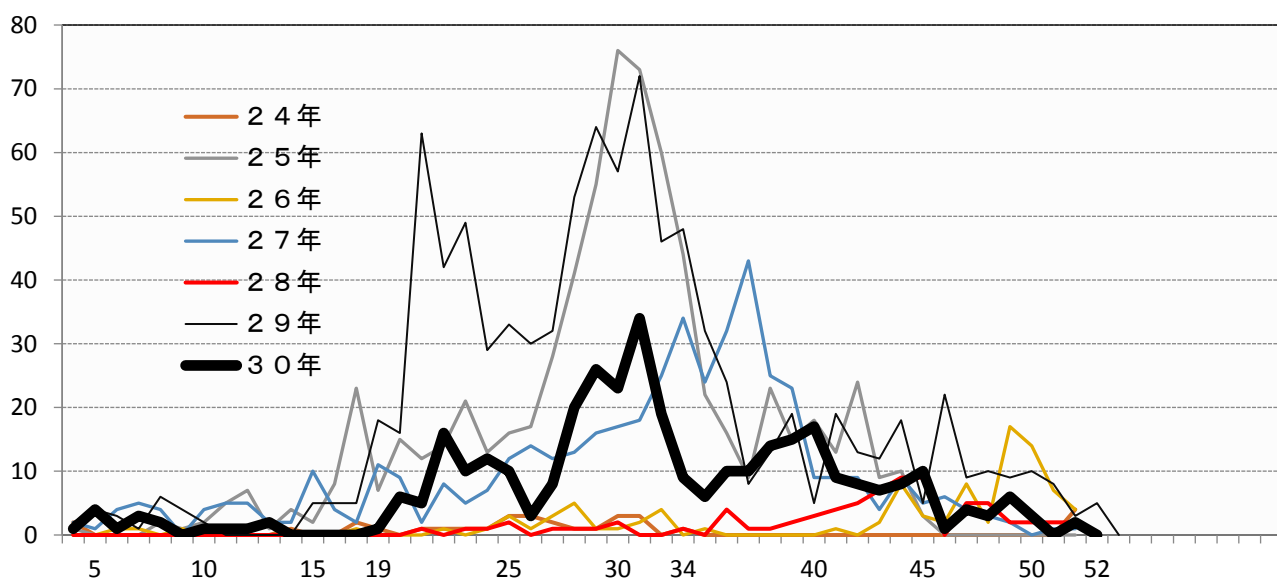
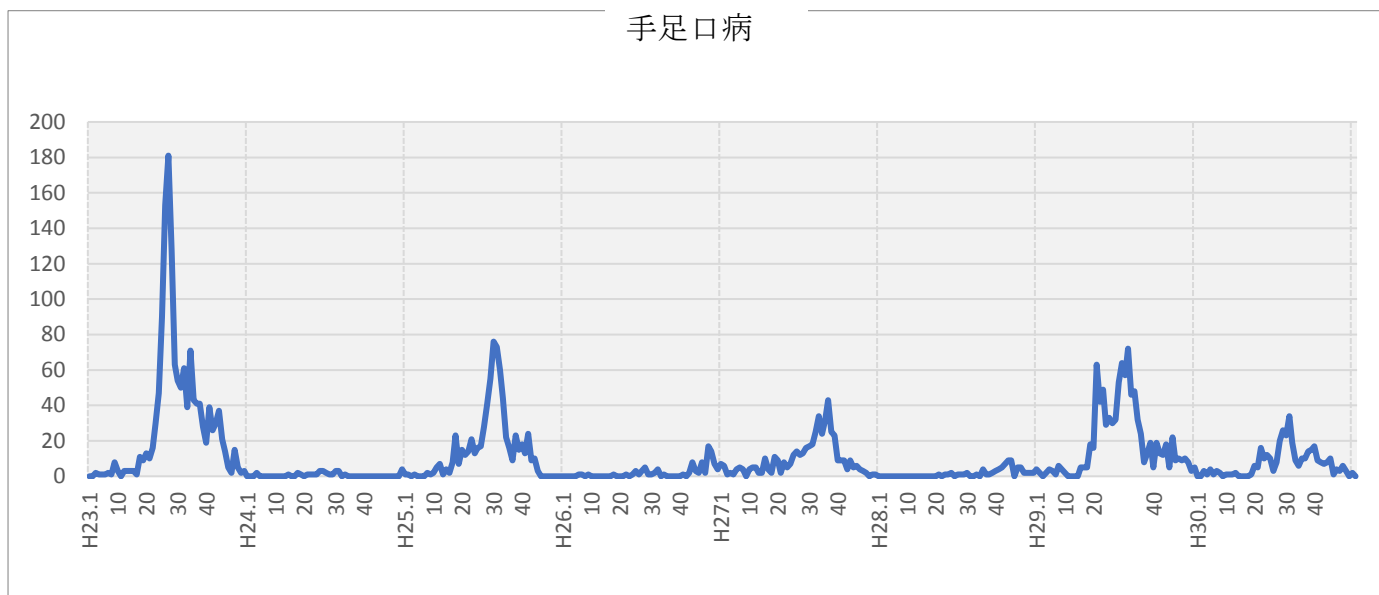
感染性胃腸炎



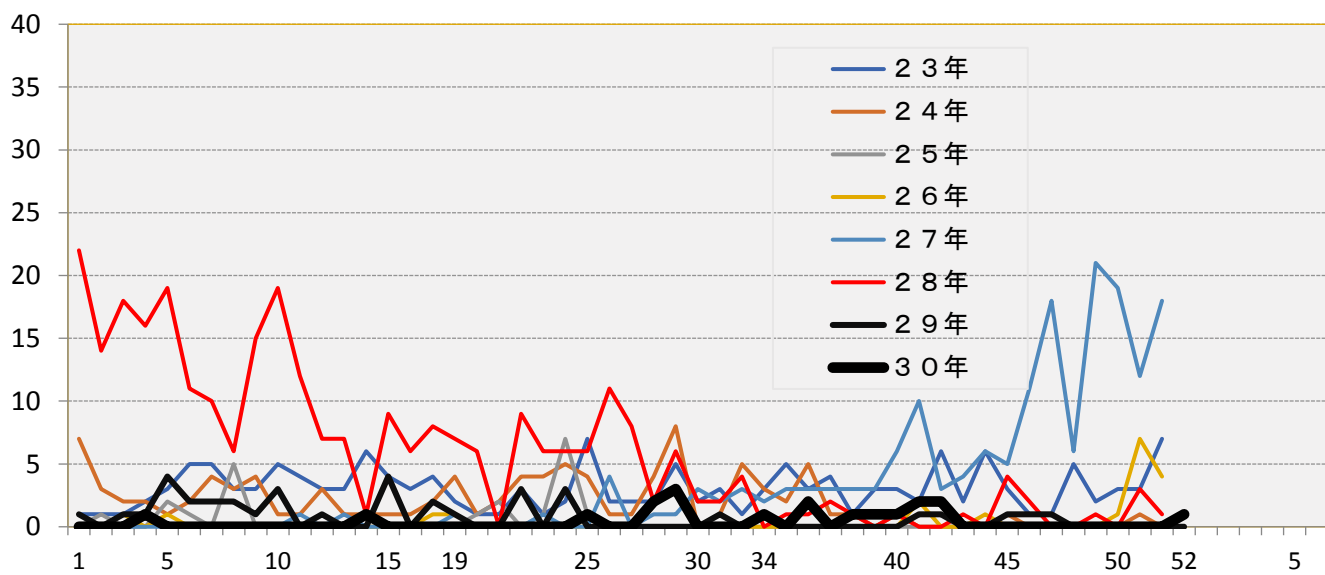
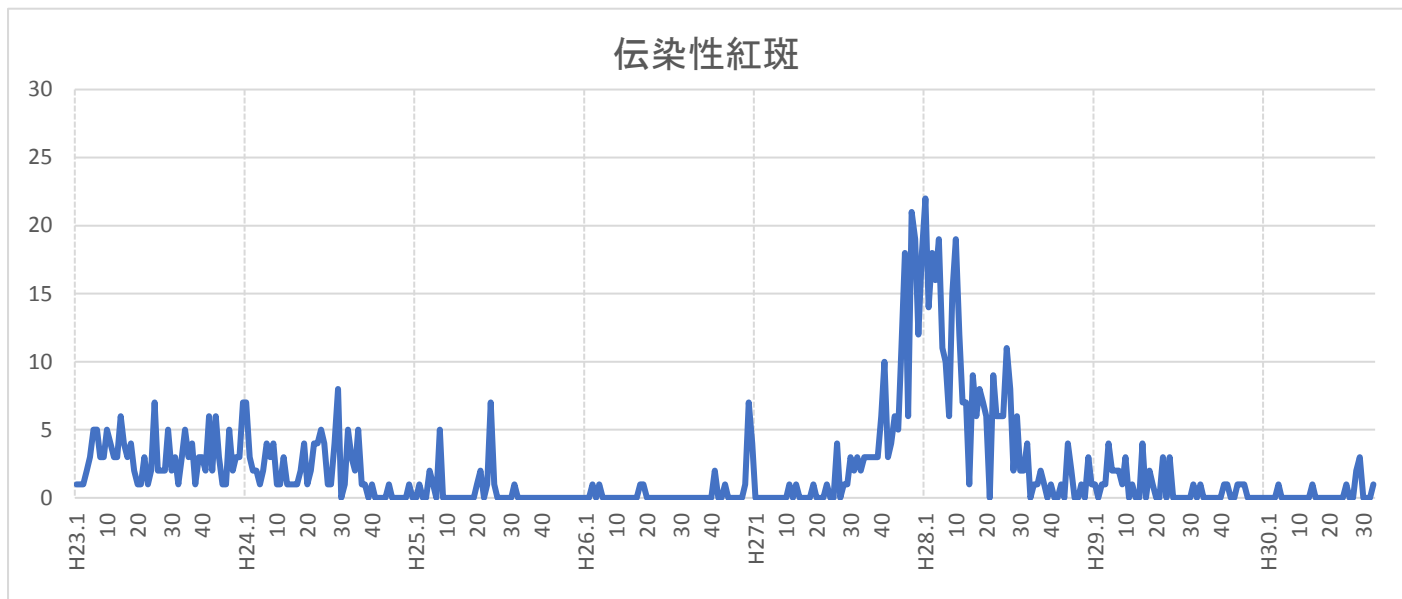
水痘



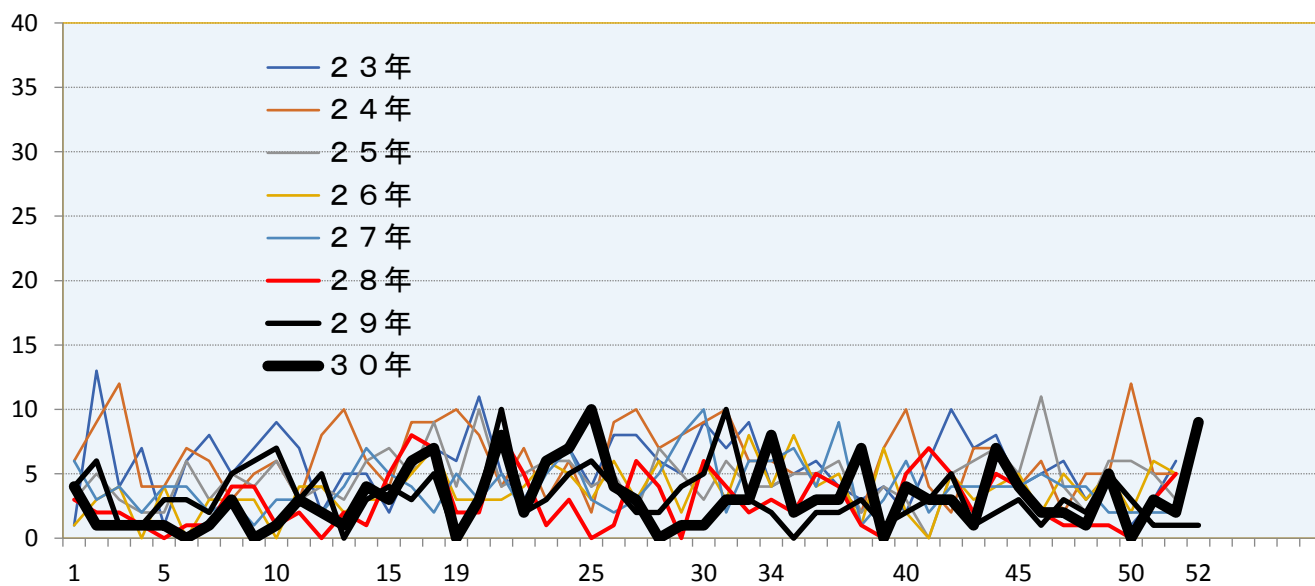
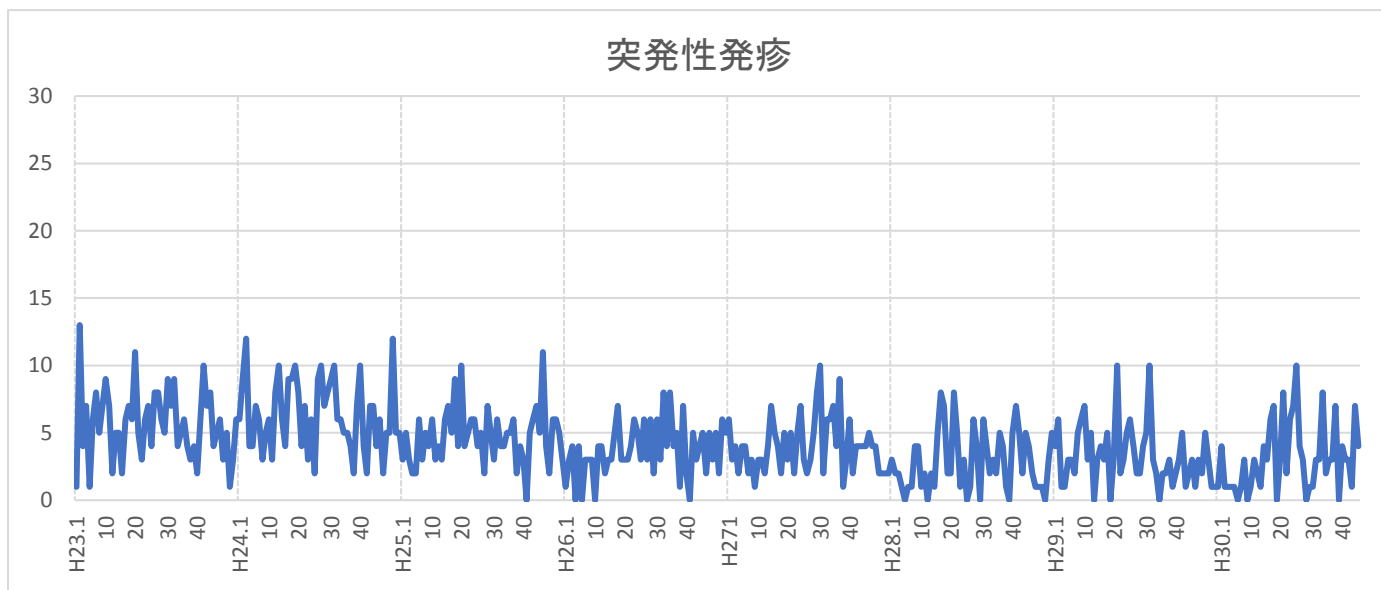
手足口病



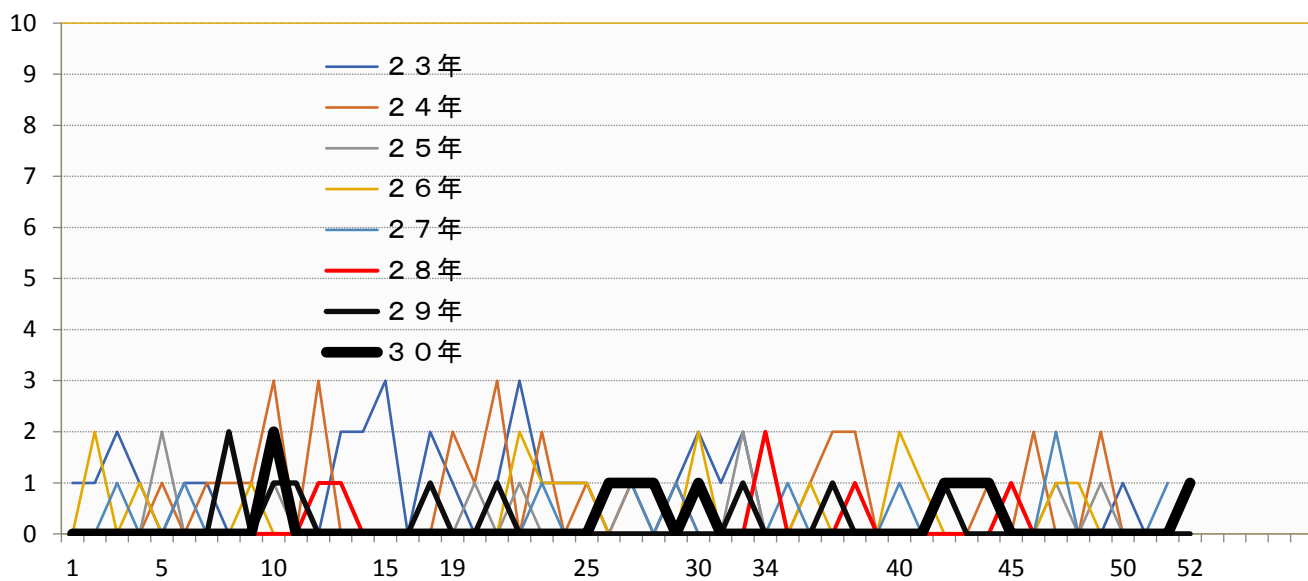
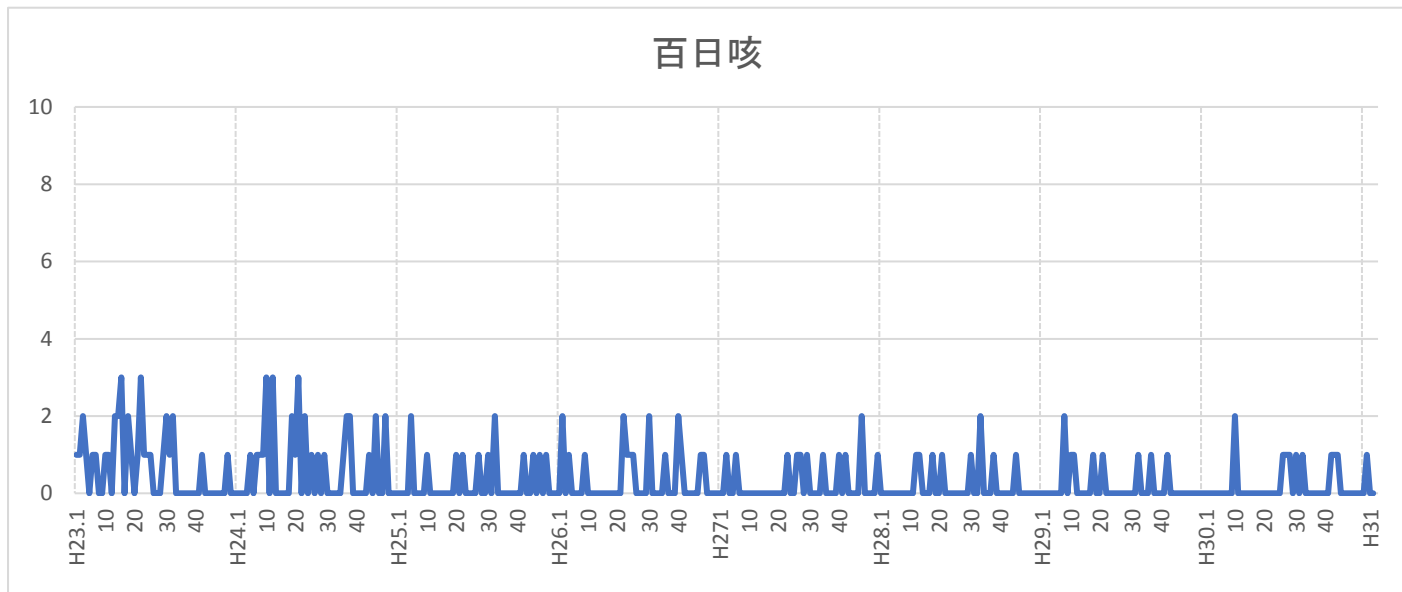
伝染性紅斑



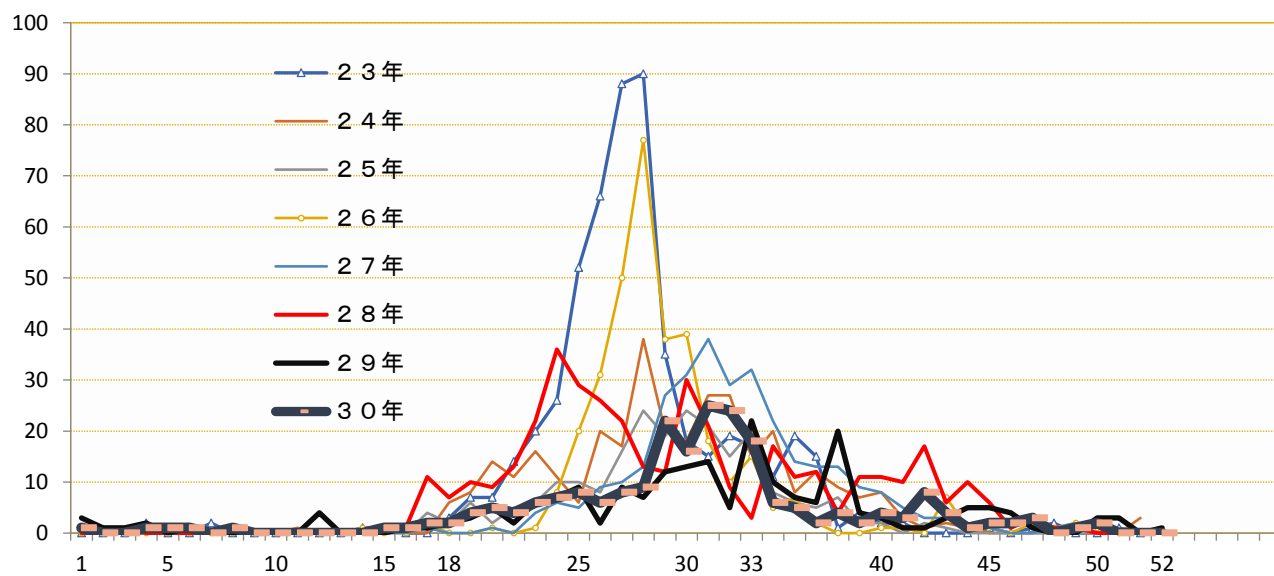
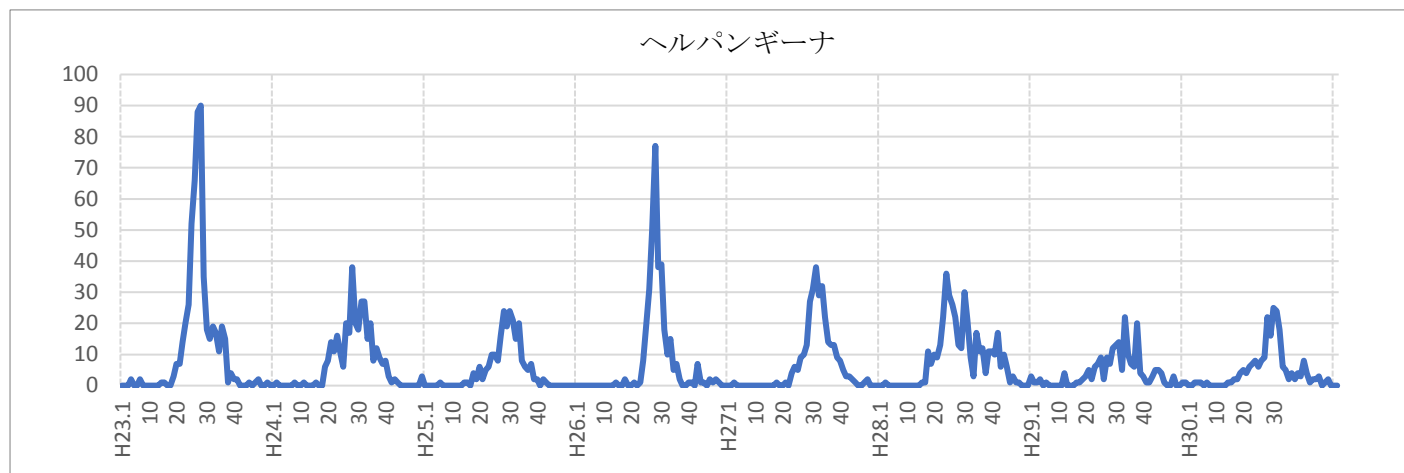
突発性発疹



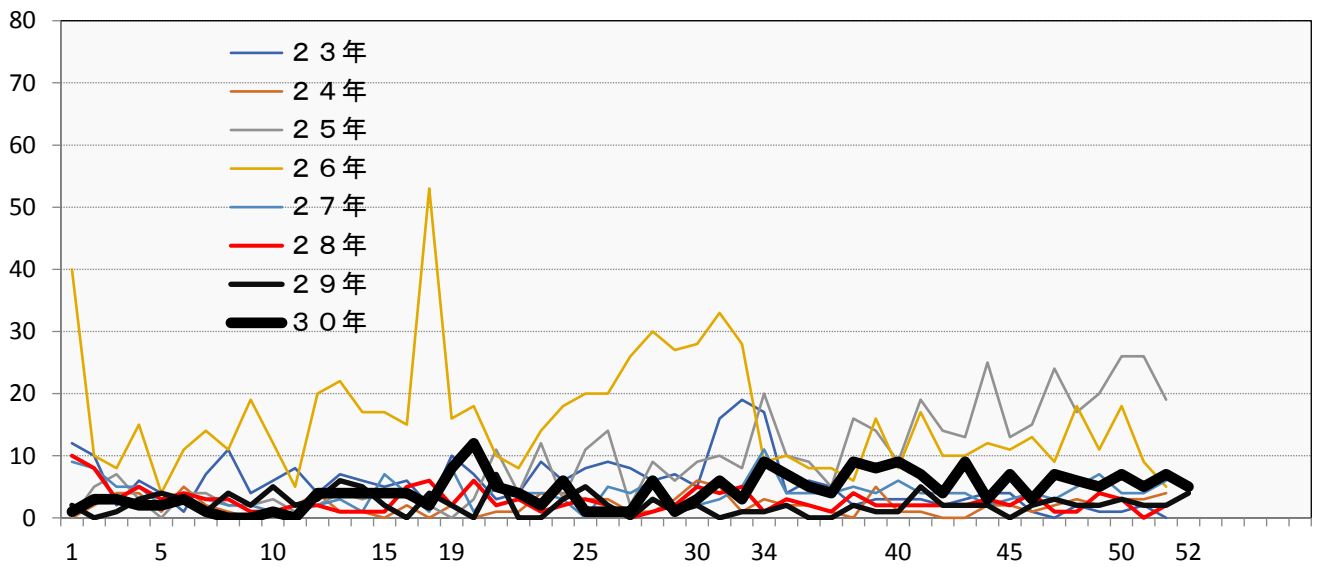
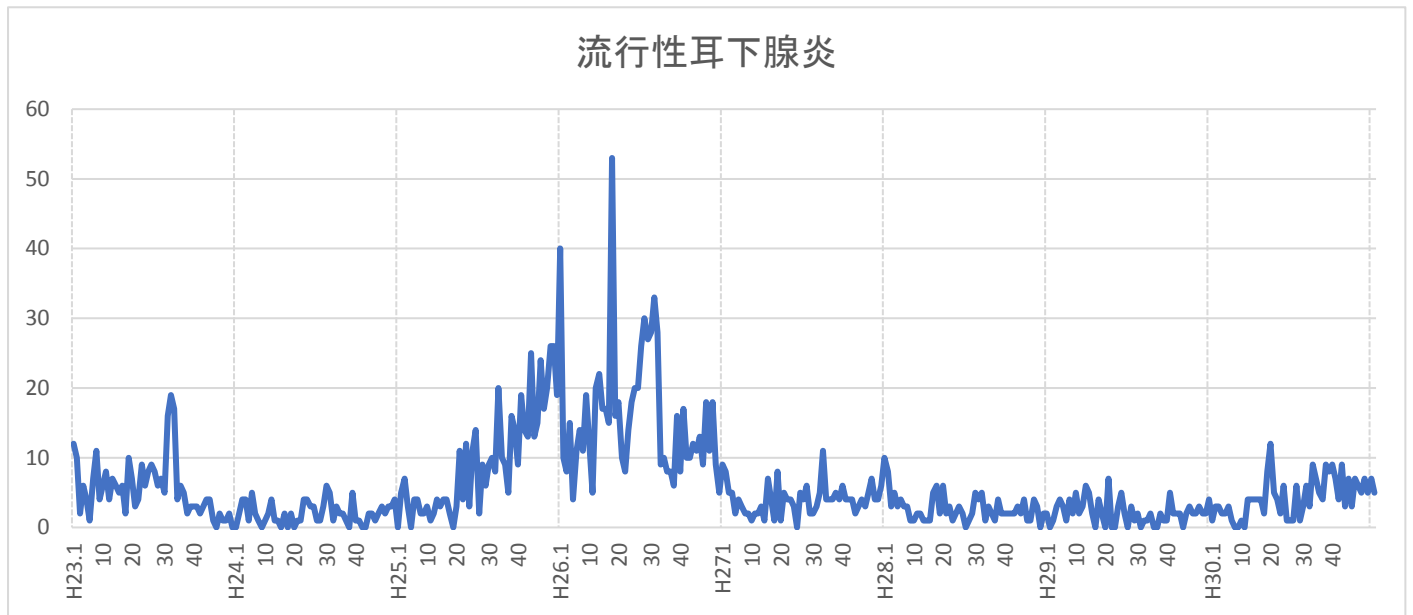
百日咳



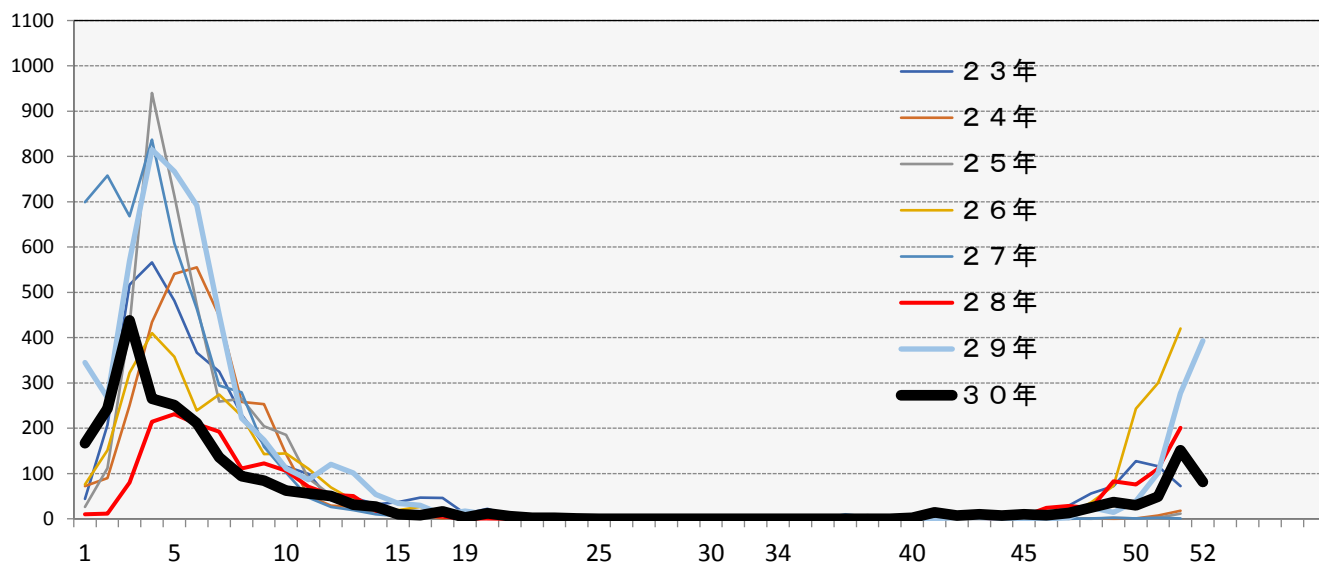
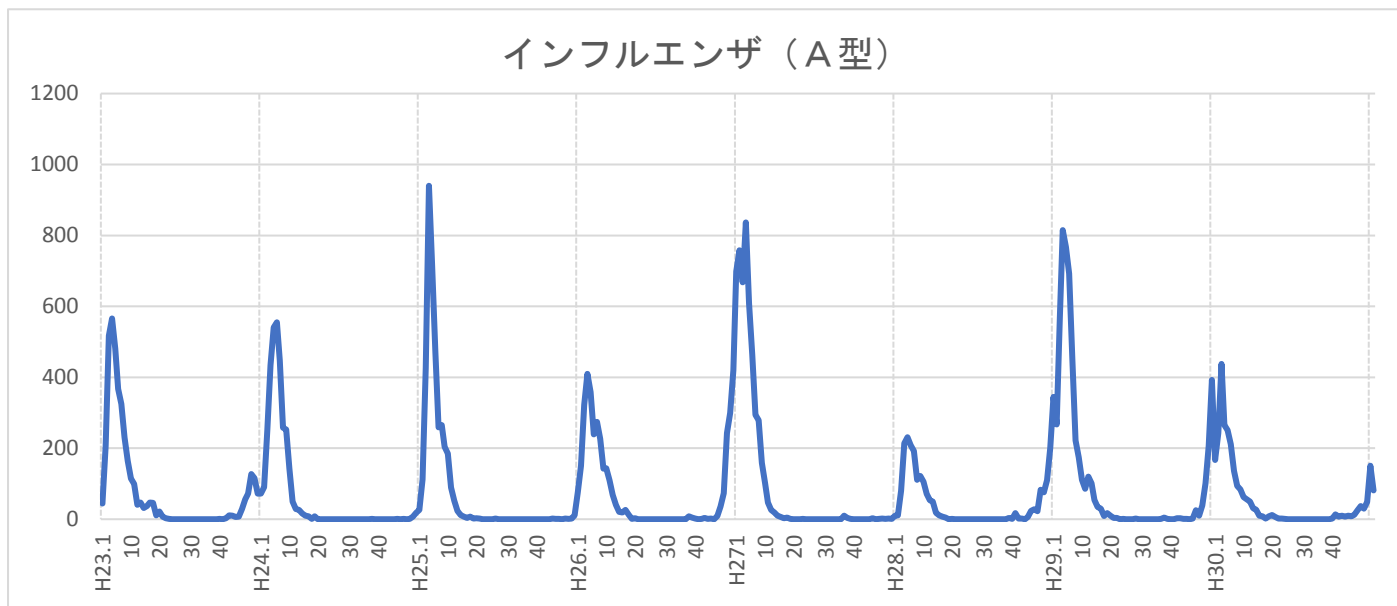
ヘルパンギーナ



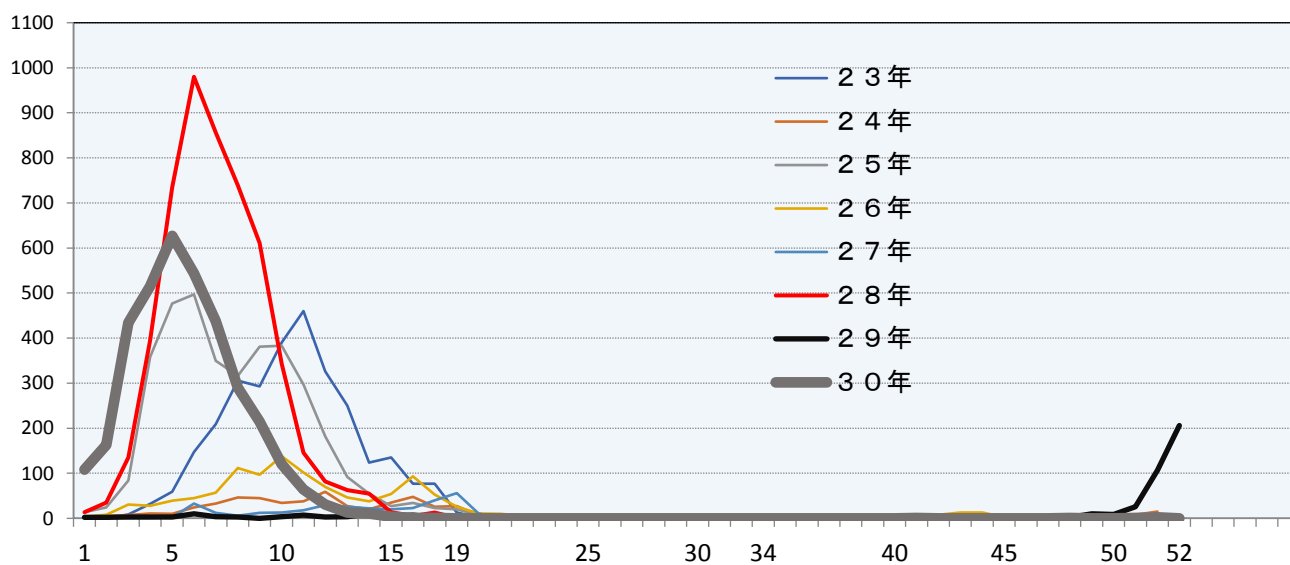
流行性耳下腺炎



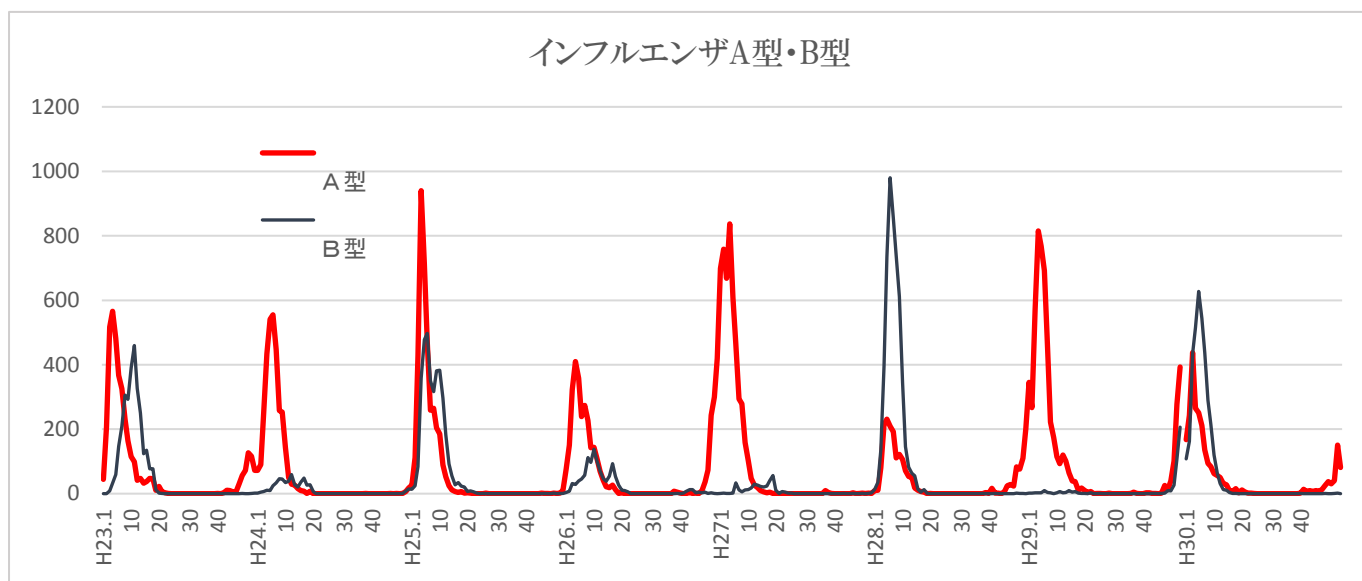
インフルエンザ (A型)



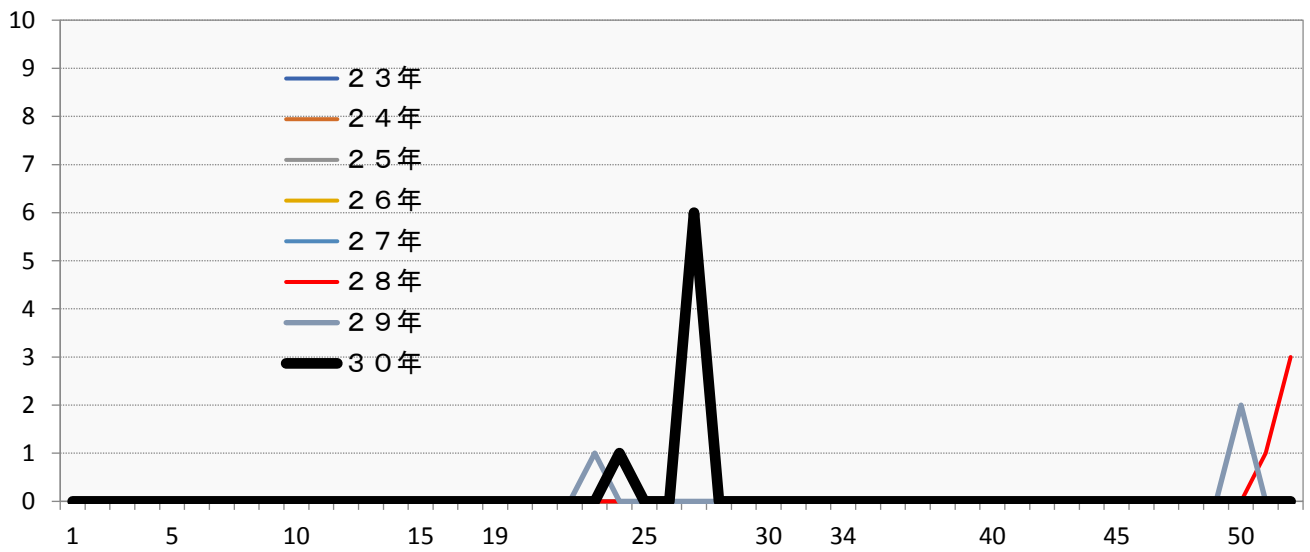
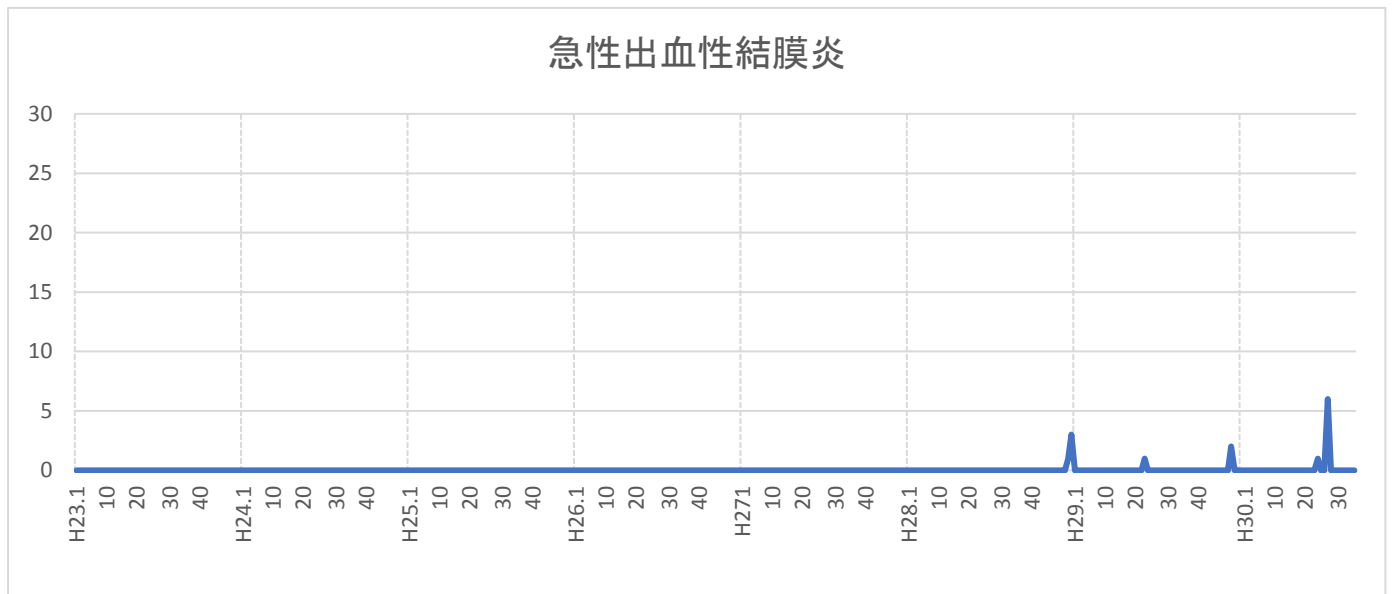
インフルエンザ (B型)



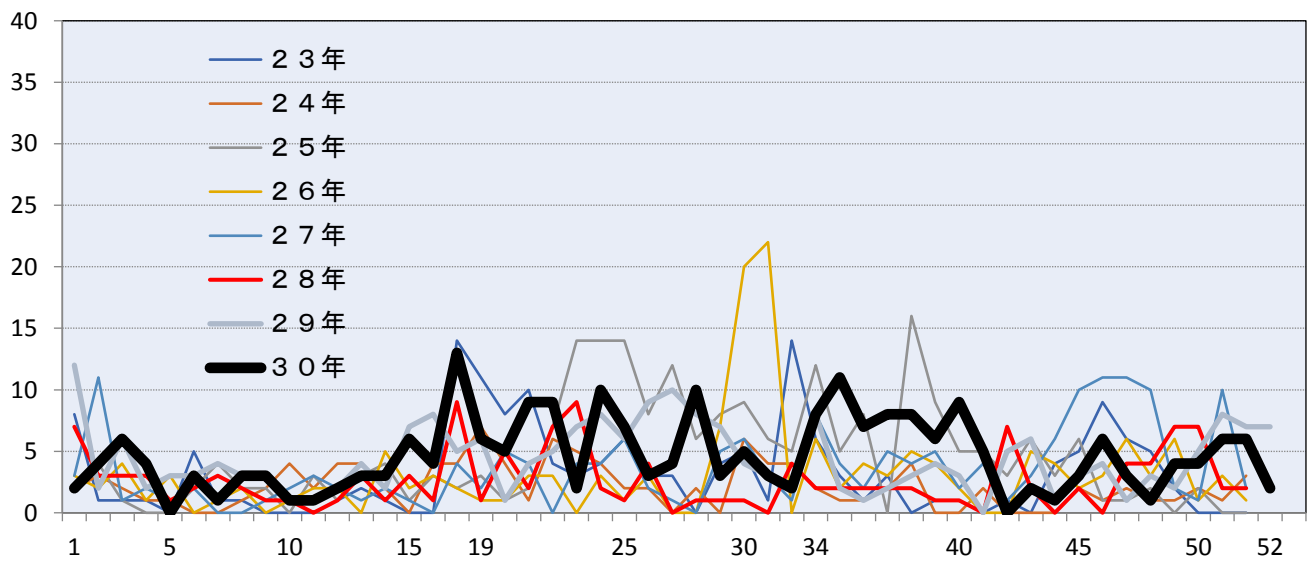
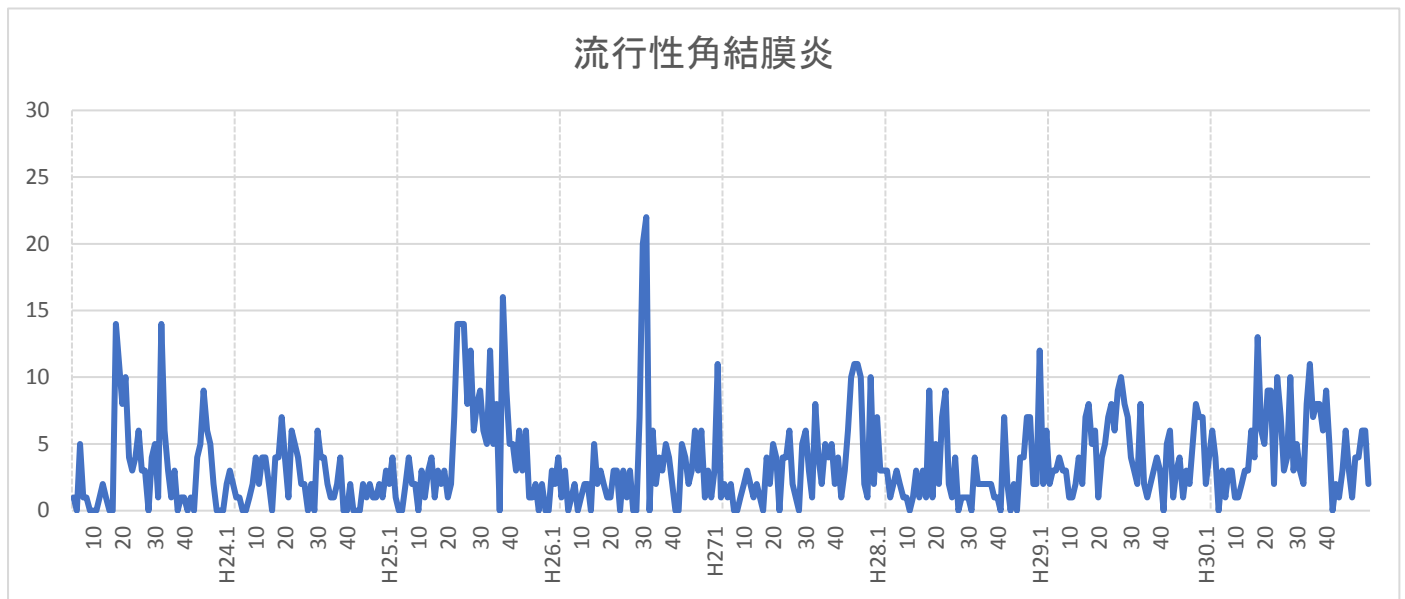
インフルエンザ A 型・B 型



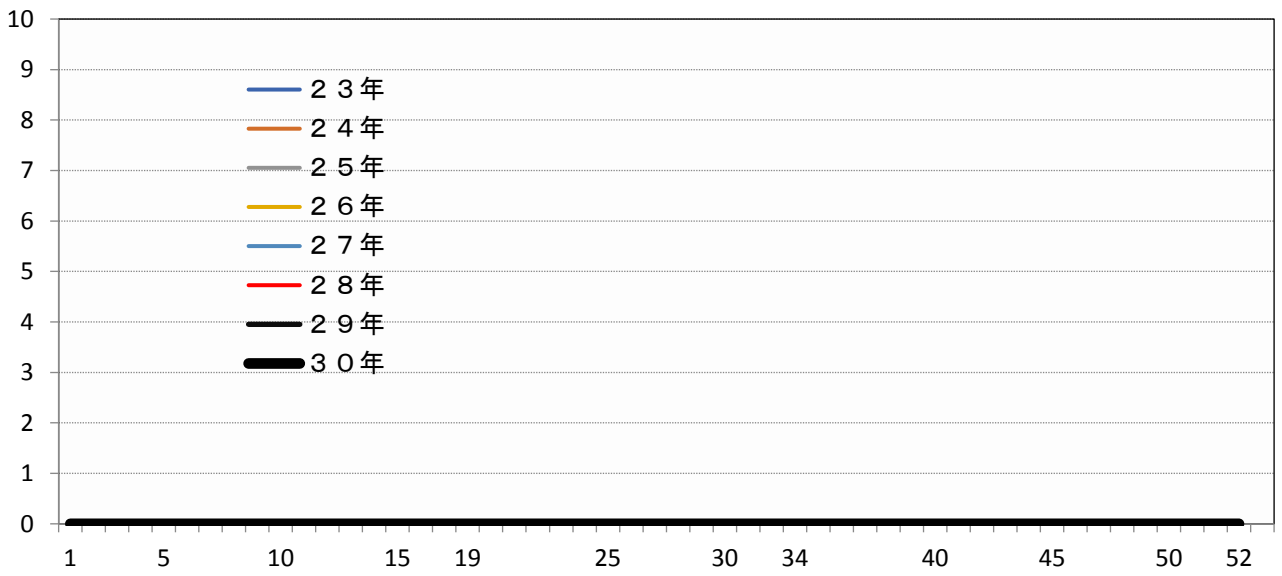
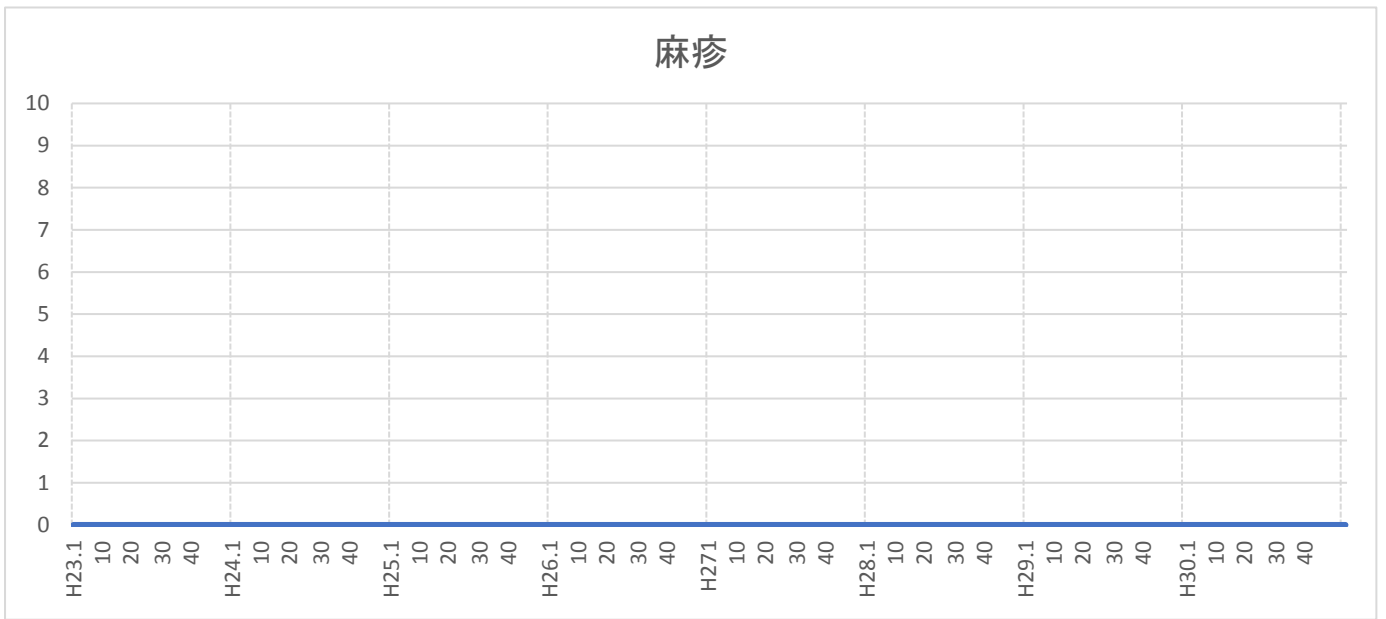
急性出血性結膜炎



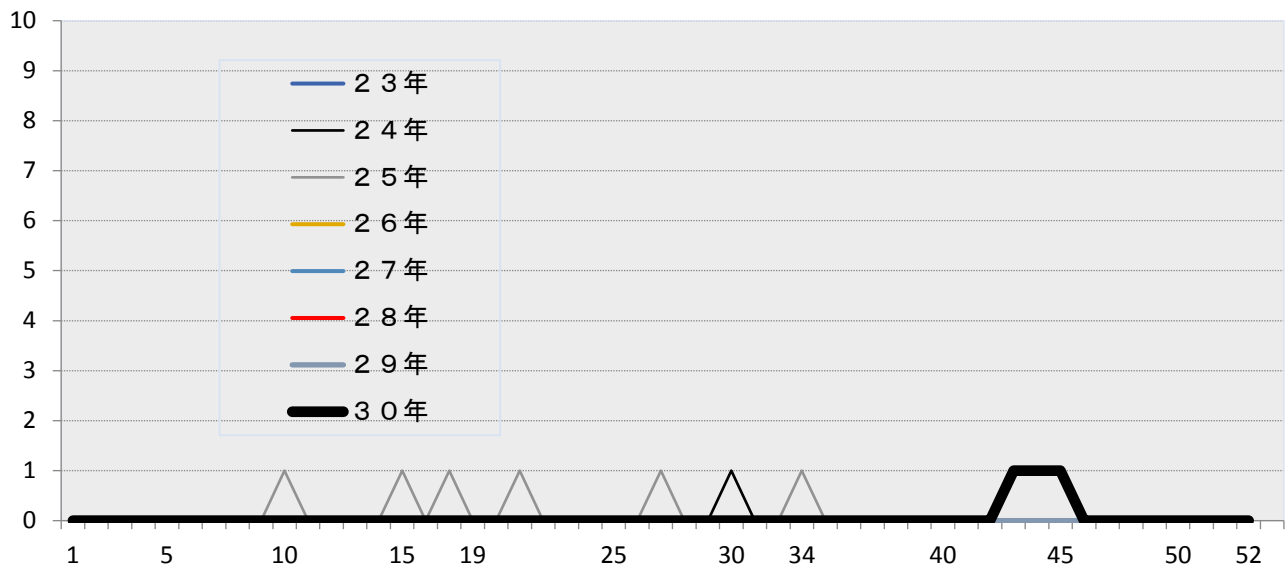
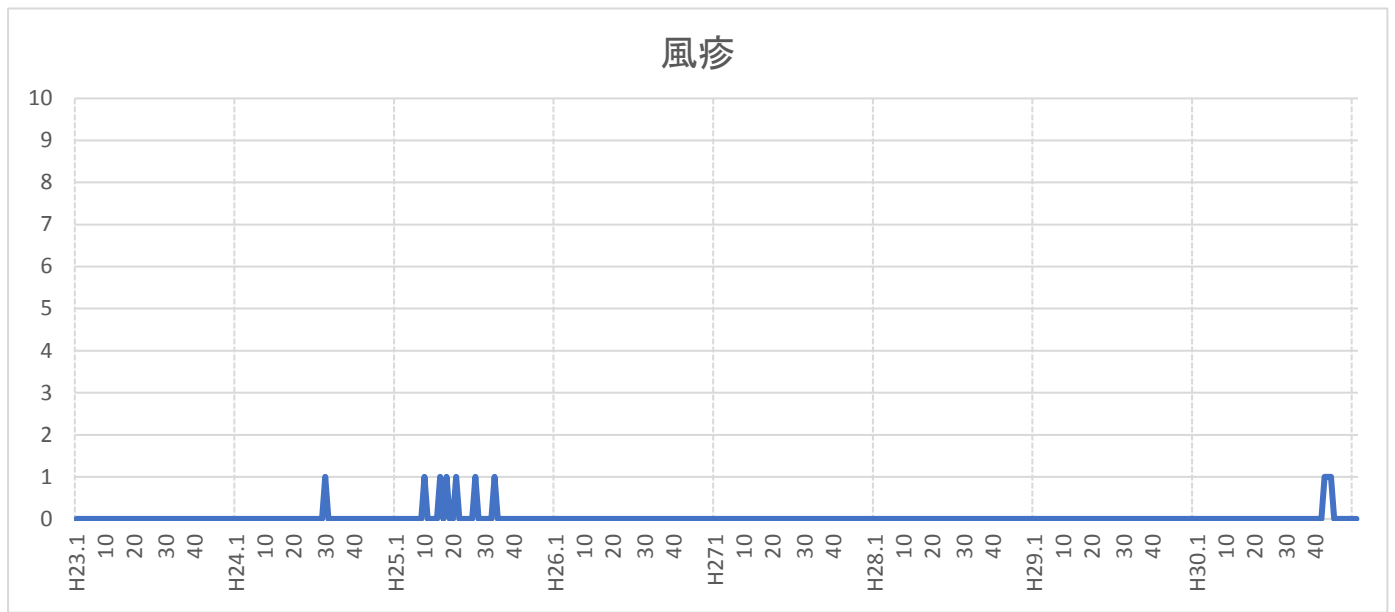
流行性結膜炎



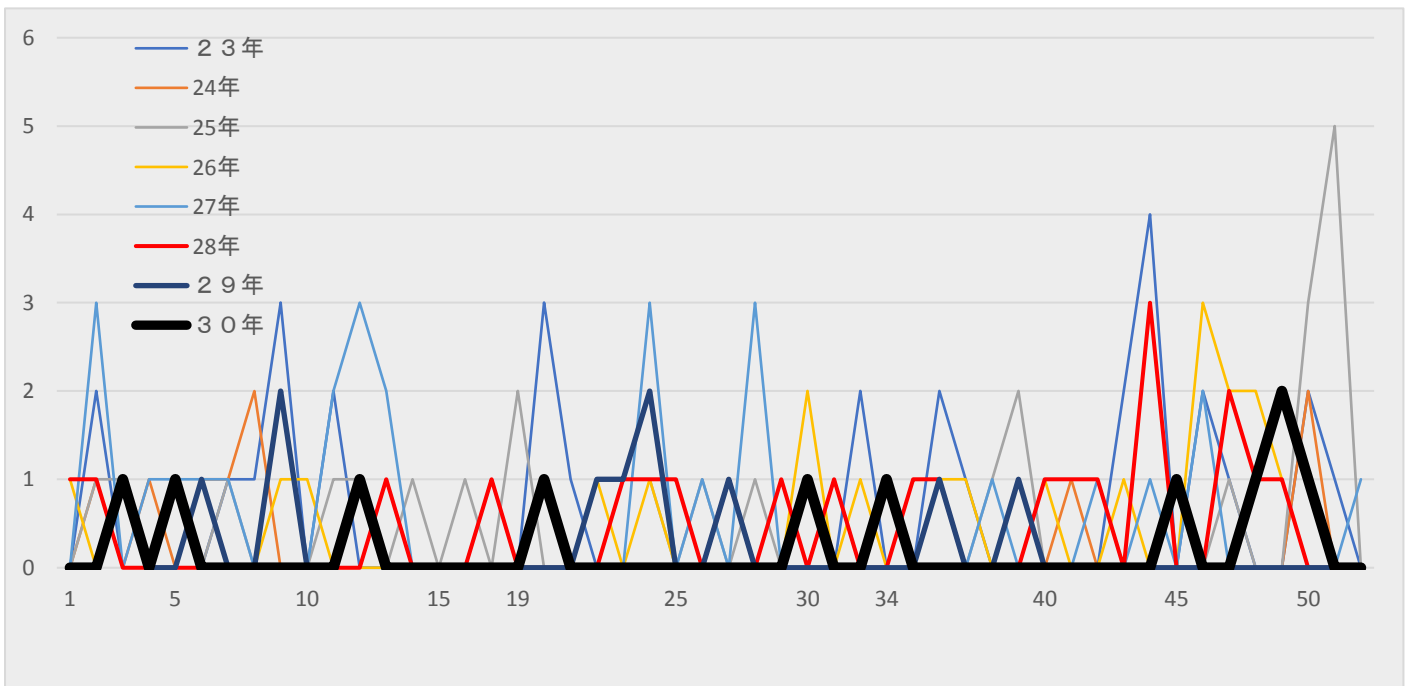
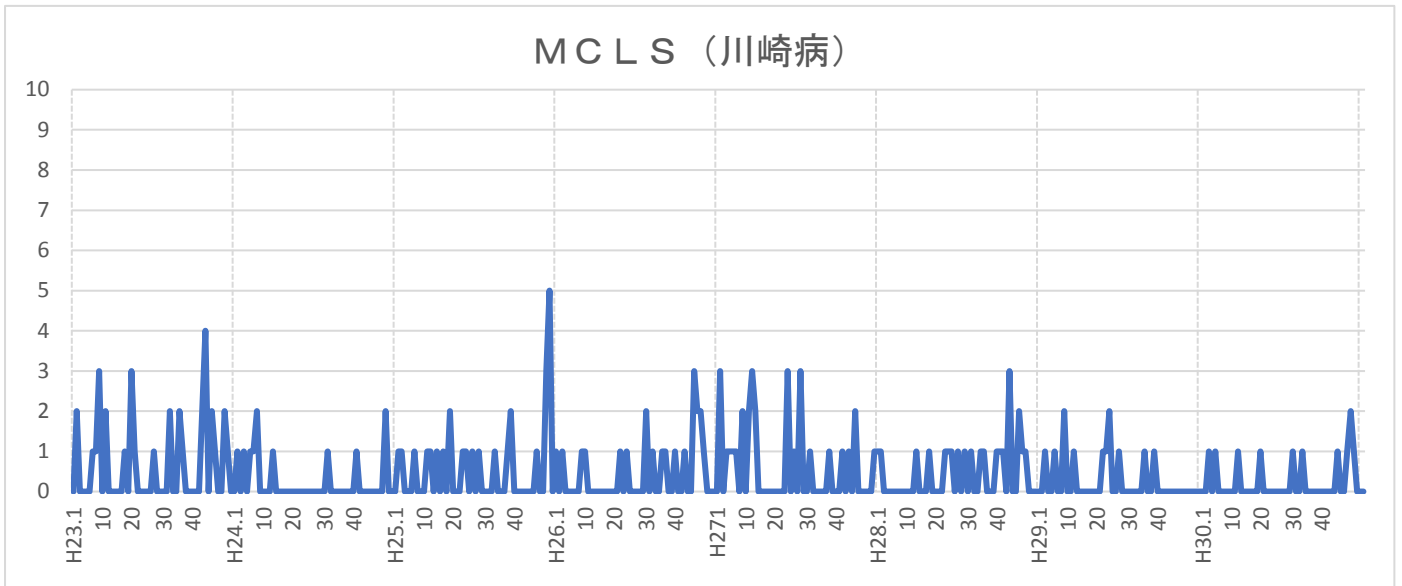
麻疹



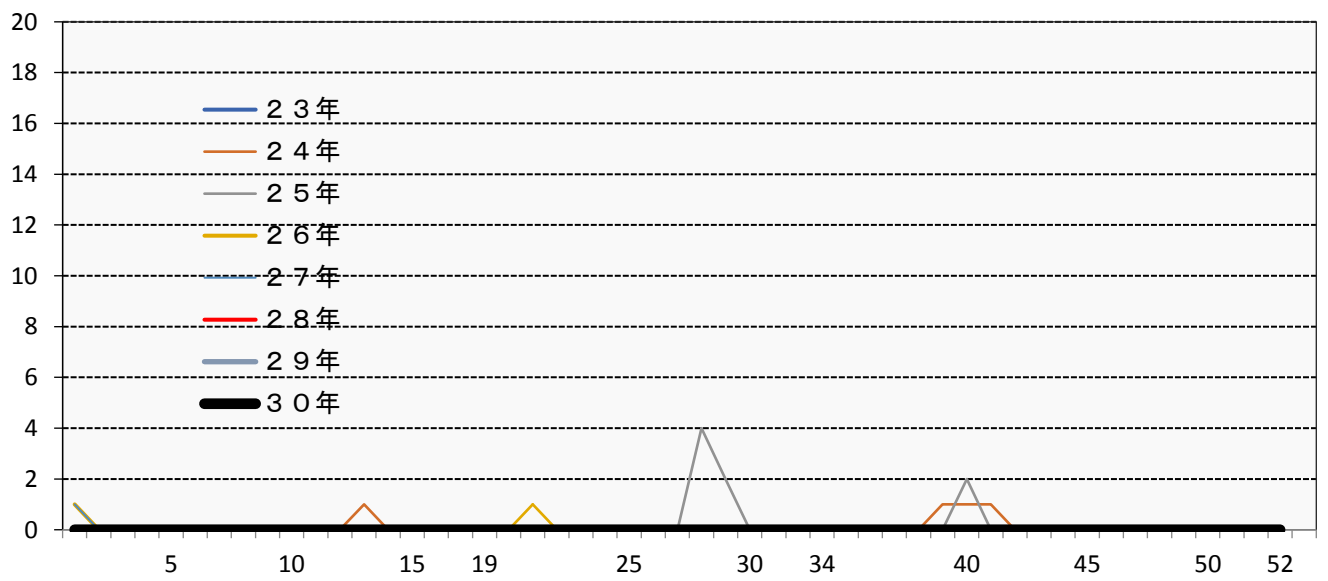
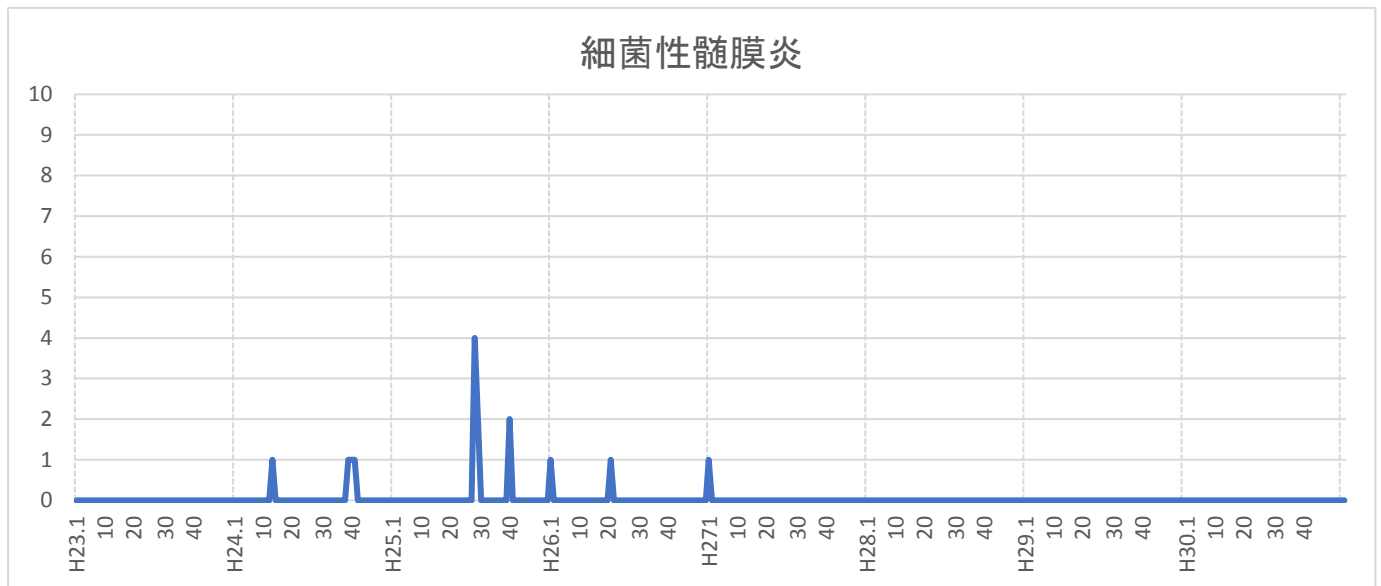
風疹



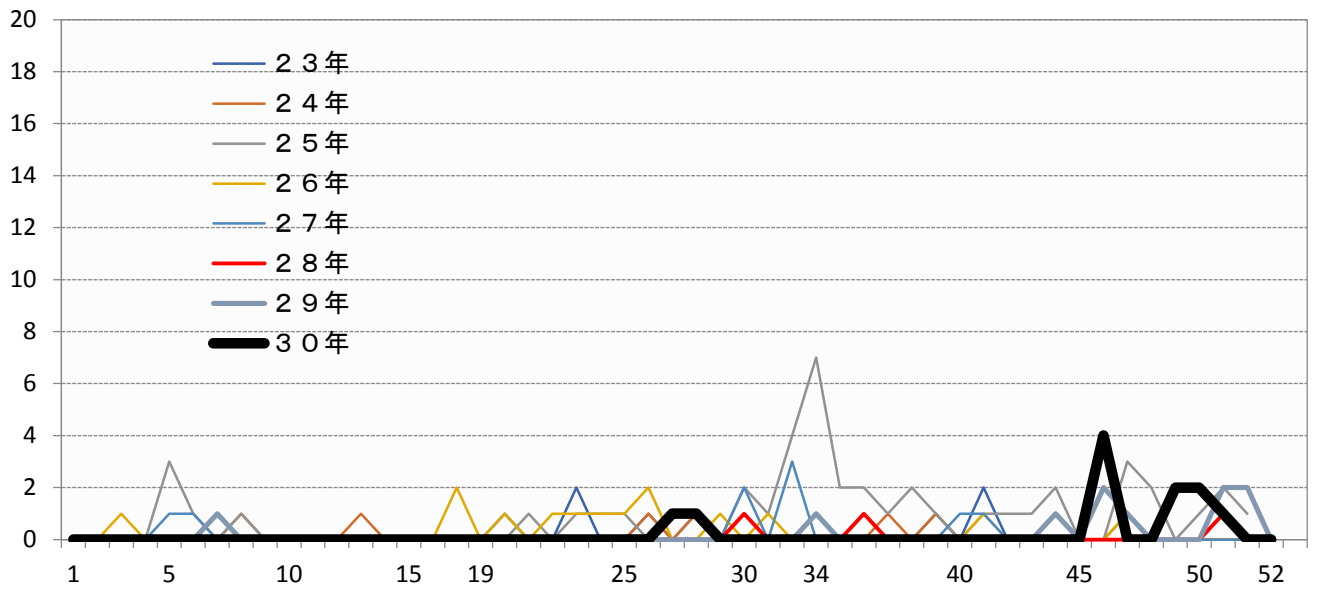
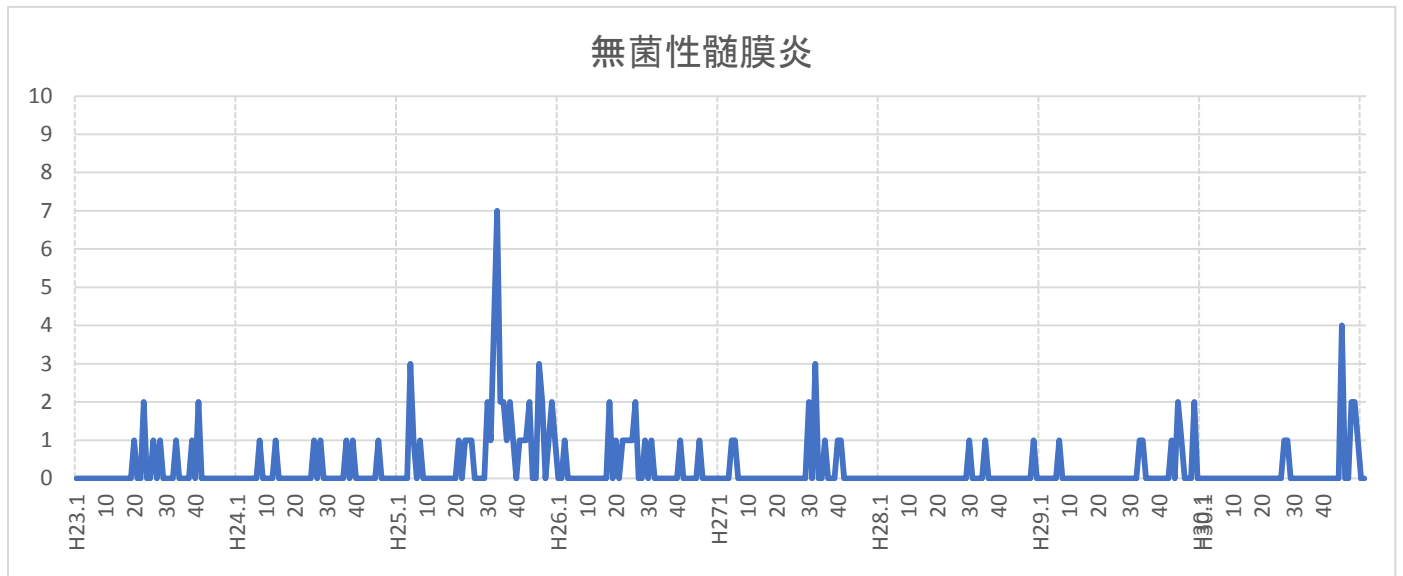
MCLS (川崎病)



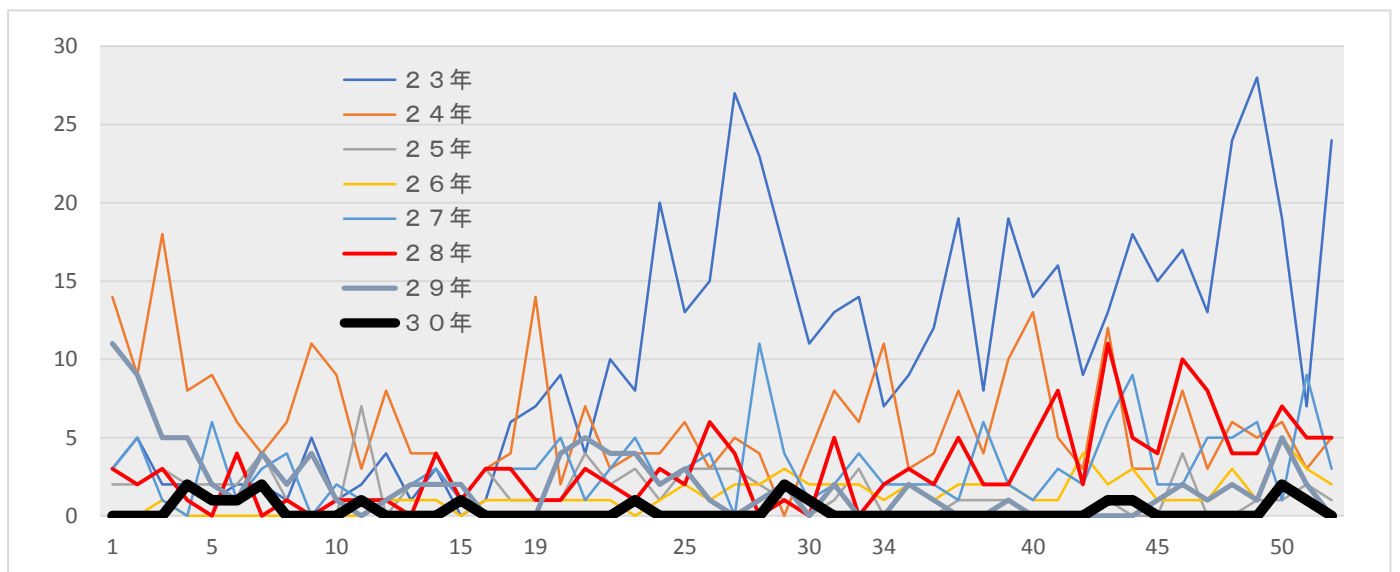
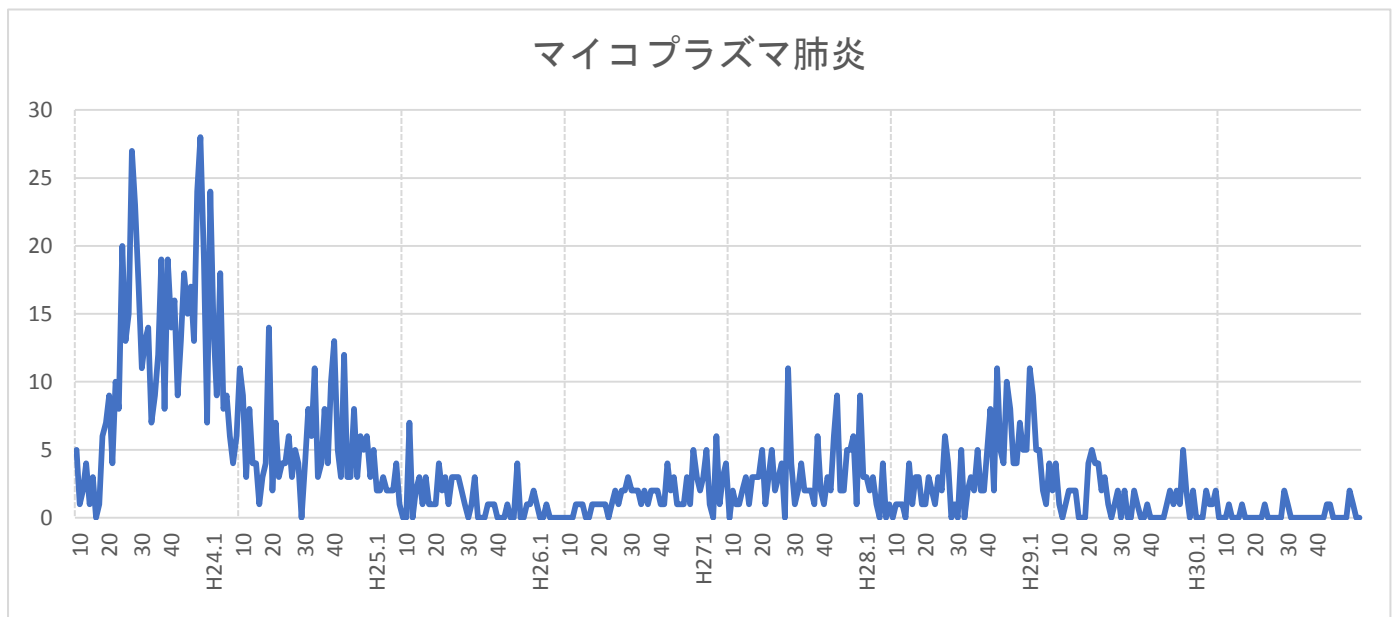
細菌性髄膜炎



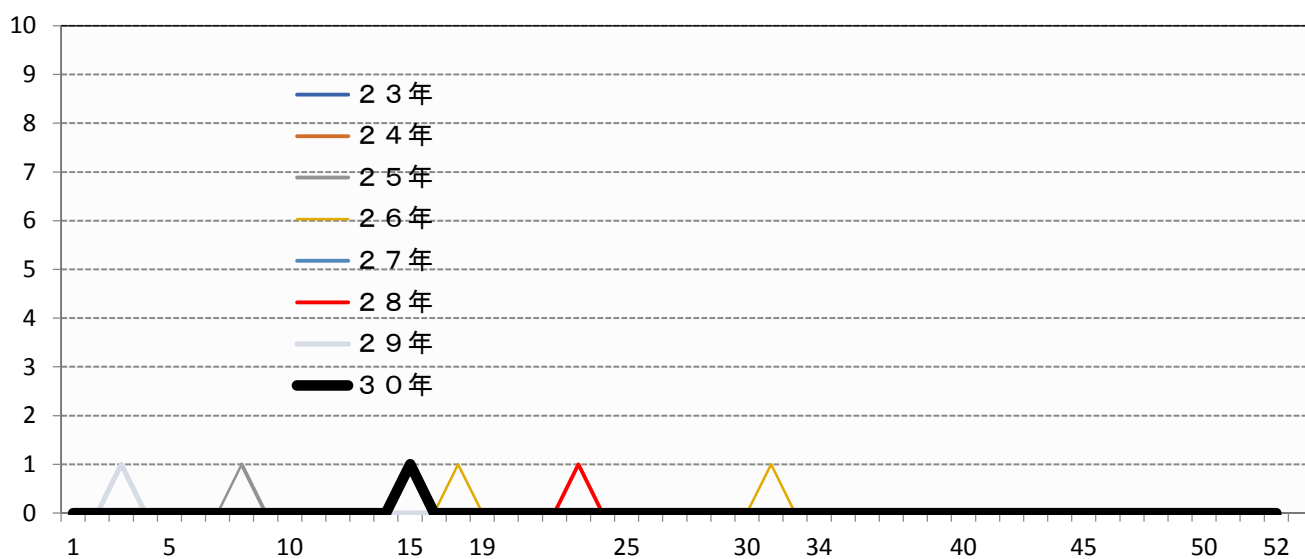
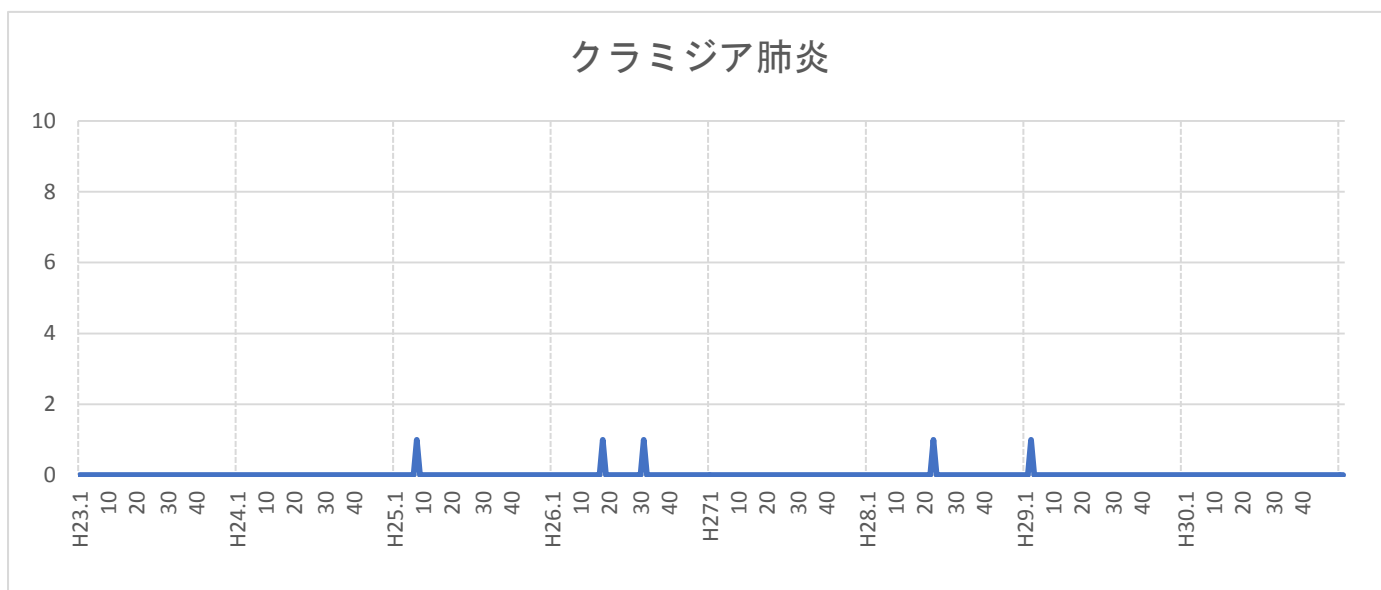
無菌性髄膜炎



マイコプラズマ肺炎



クラミジア肺炎



報告数

